

Reversing Cancer with Biochemistry

Dr. Dana F. Flavin

The Foundation for Collaborative Medicine and Research

www.collmed.org

Steps to Reverse Cancer

1. **Detoxification:** Eliminate Heavy Metals, Fungi, Parasites & Viruses
2. **Diet:** Alkaline diet, no Sugar or Red Meat
3. **Nutrient Support:** Specific anti Cancer Nutrients
4. **Off label Drugs:** Targeted Pharmaceutical Therapies

Detoxification

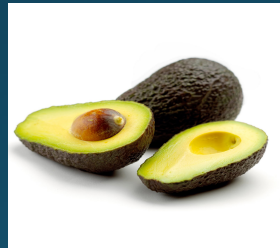
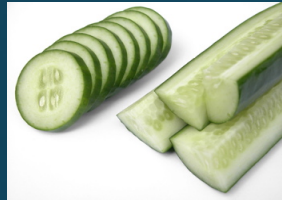
- Heavy Metals (Lead, Aluminium, Mercury..)
- Parasites (Intestinal including H. Pylori)
- Fungi (Candida)
- Viruses (Epstein Barr, Hepatitis B, Papilloma..)

21 Year old Patient with Non Hodgkin's Lymphoma before and after Detox



Diet of Alkaline Foods

- Spinach
- Kale
- Cucumber
- Broccoli
- Avocado
- Celery
- Red Pepper



Nutrient Support in Cancer Therapy

- Enhances standard therapies
- Decreases side effects
- Increases the immune system
- Shortens recovery time
- Prolongs survival

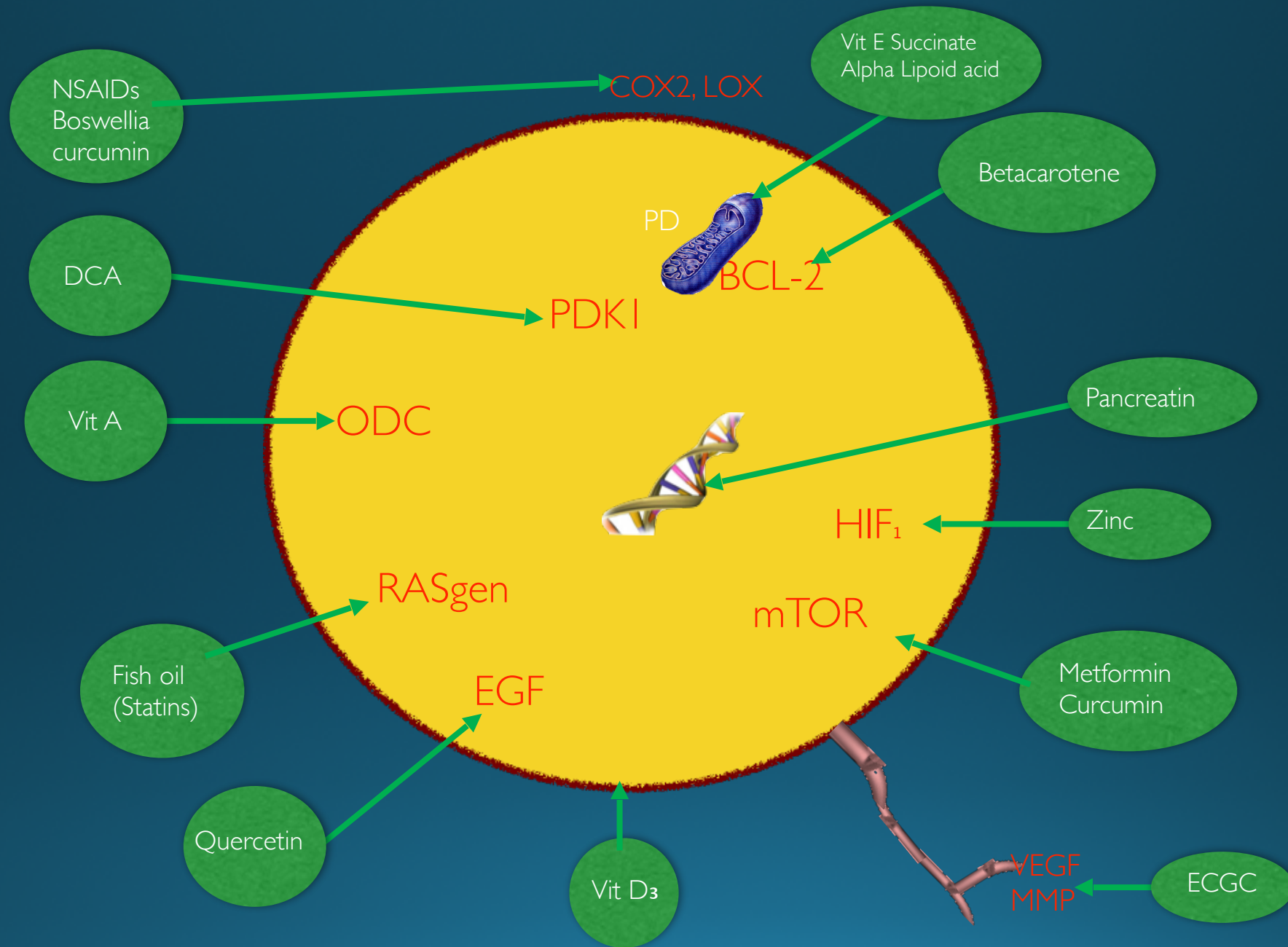
NUTRIENTS INHIBITING MOLECULAR TARGETS IN CANCER CELLS

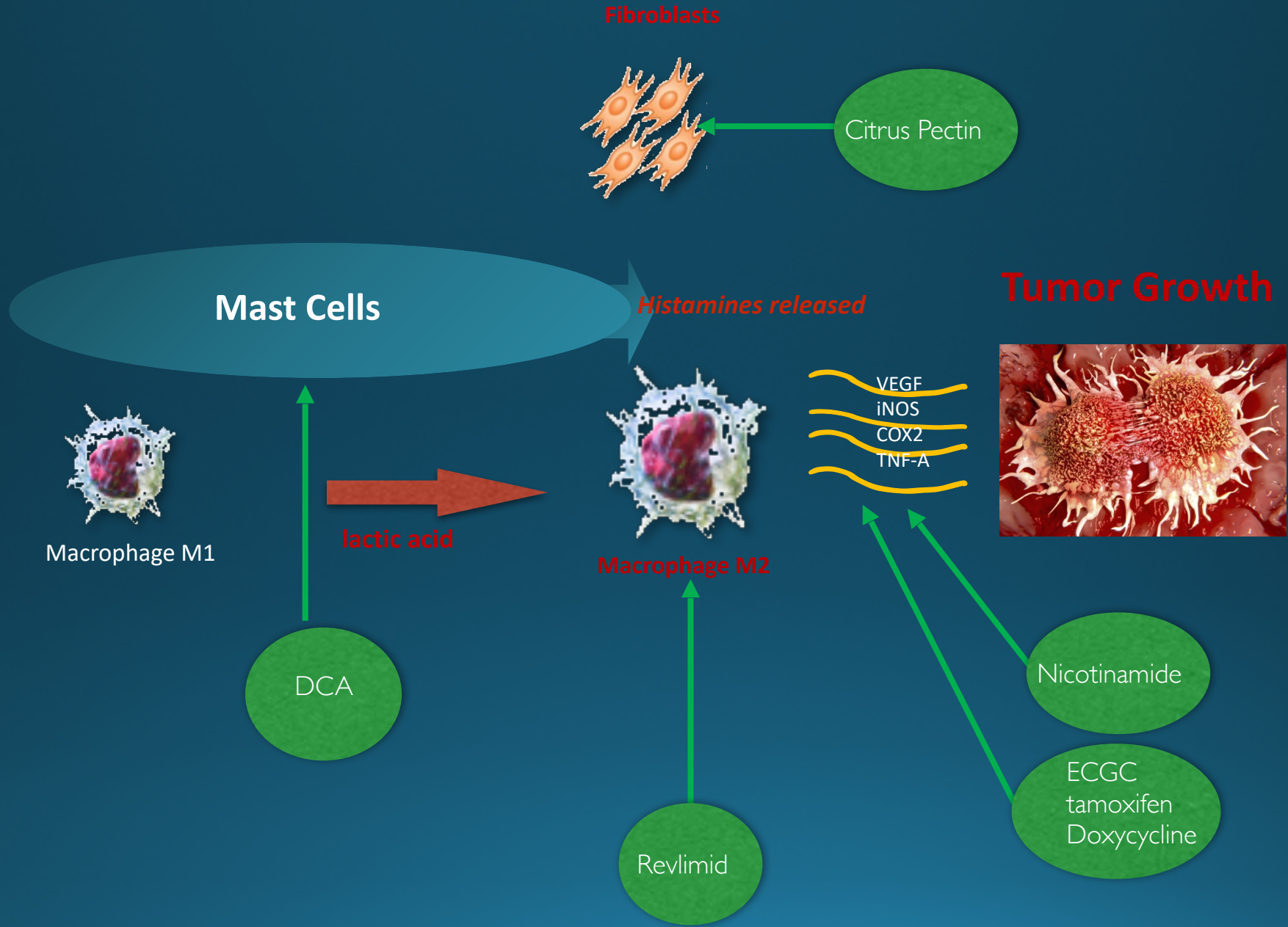
| | |
|-------------------|---------------------|
| Cod liver oil | Butyric acid |
| Vitamin D3 | Iodine (Nascent) |
| Boswellia serrata | Fish oil |
| Melatonin | Turmeric (curcumin) |
| Ascorbic acid | Nicotinamide |
| Sodium selenite | Lactoferrin |



NUTRIENTS EFFECTIVE IN MITOCHONDRIAL TARGETS OF CANCER CELLS

- Beta carotene
- Alpha tocopherol succinate
- Retinoic acid
- Quercetin
- Betulinic acid





Immune Targets in Cancer Reversals

Immune Suppression:

- T-regs= Cyclophosphimide, Revlimid
 - (Fox P3 = LDN)
- MDSC = Cimetidine
- Mast cells: Cromolyn
- Transforming Growth Factor B= Pancreatic enzymes

NK Cell activation:

- shitake, coriolus, cordyceps,
revlimid (Fox P3 = LDN)

Cortisol:

- Rhodiola
rosea

Cancer Stem Cells:

- curcumin,
metformin, retinoic
acid

Fungi (candida):

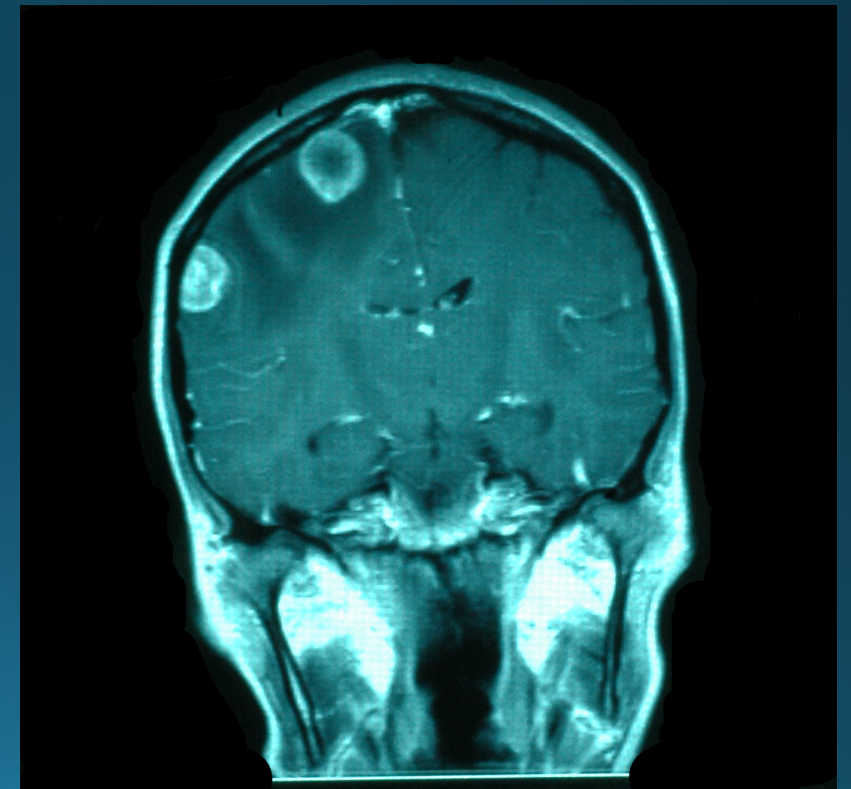
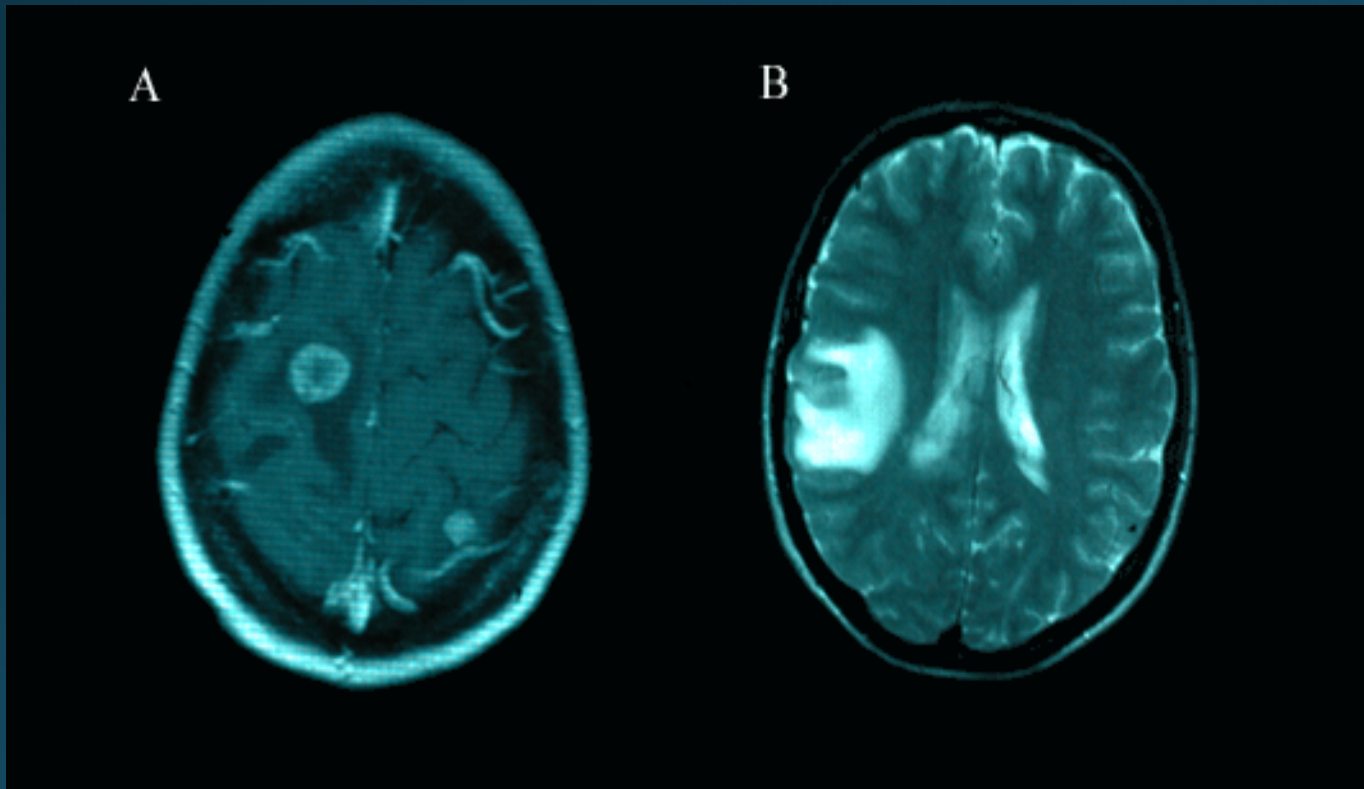
- oregano oil

Reversing Cancers with Biochemistry

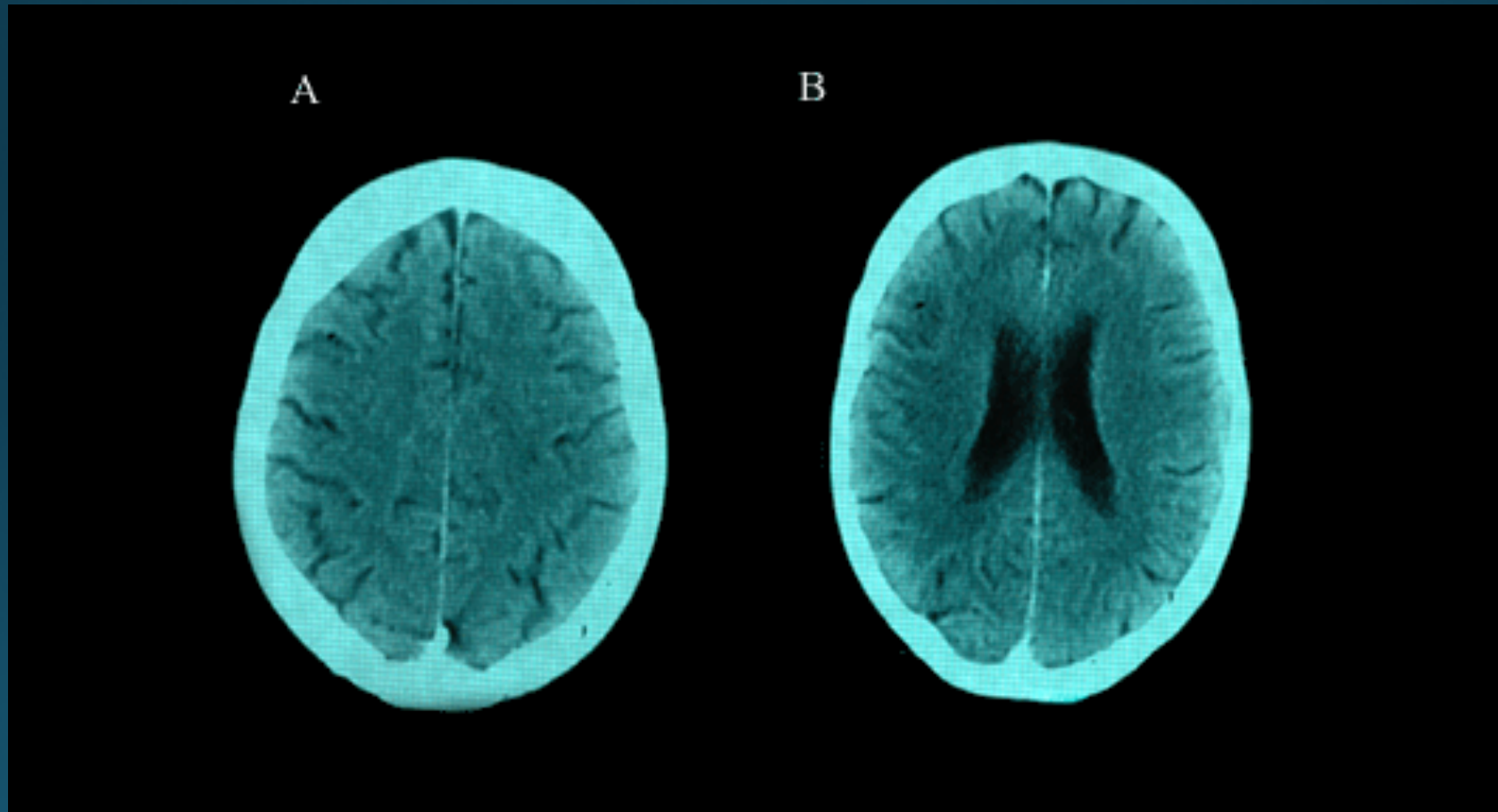
Is it possible to reverse cancer with diet and nutrients
when all other therapies have failed?

Boswellia Serrata in Breast Cancer

- 39 year old female, Breast Cancer, Brain Metastases. Radiation, chemo and monoclonal antibody therapies failed.



3 months after *Boswellia Serrata* and Diet regimen. Complete regression

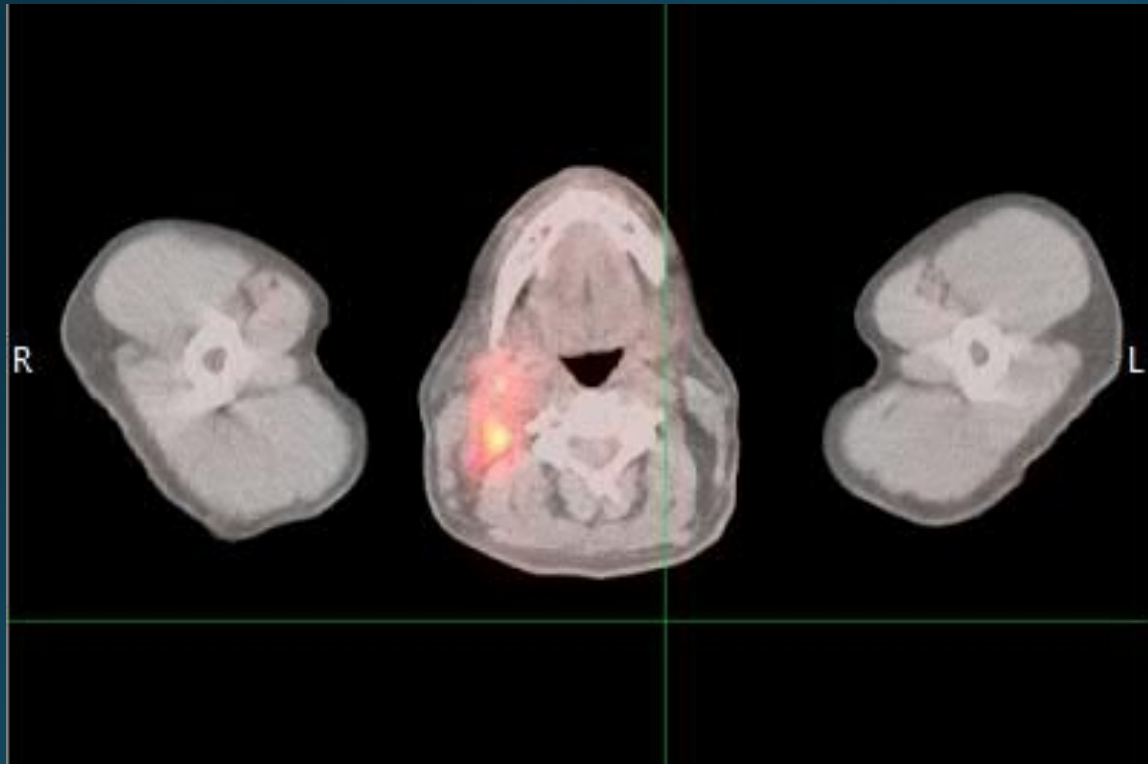


Off Label Drugs in Cancer Therapy

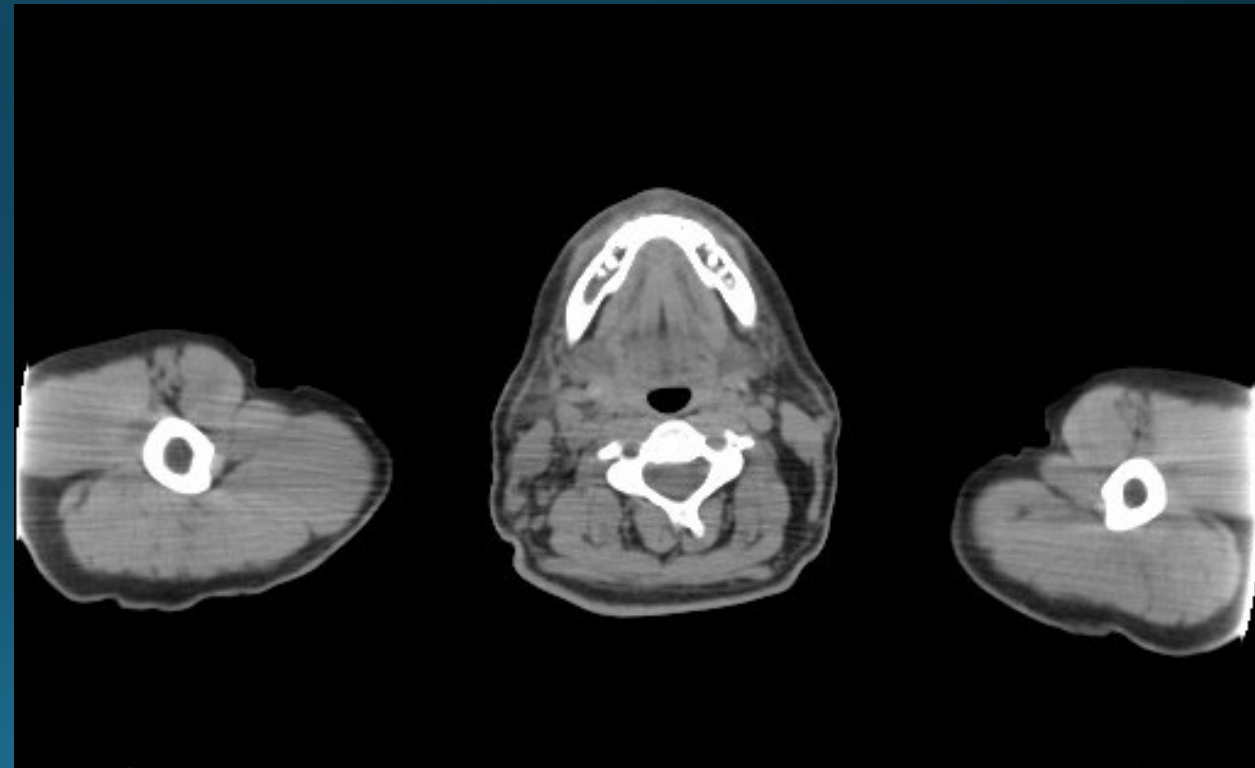
- A new substance is being tested for cancer therapy called dichloroacetate (DCA).
- This substance is a natural by product of water chlorination that inhibits the anaerobic metabolism in tumor cell Mitochondria.
- Originally used for Congenital Lactic acidosis.

Non Hodgkins Lymphoma

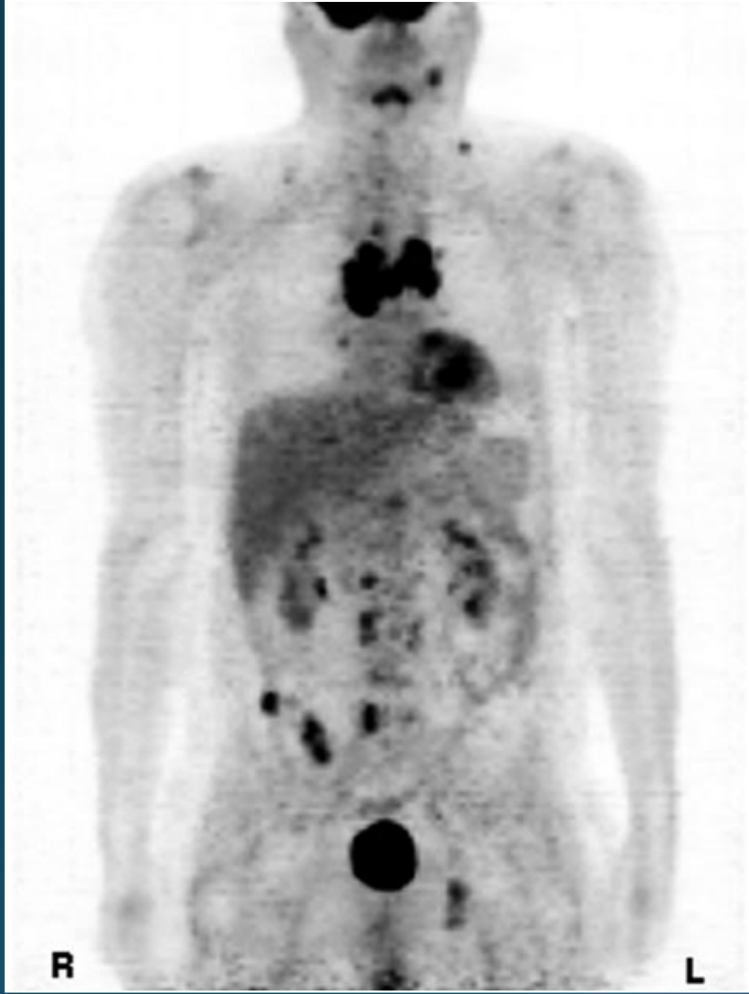
Before DCA



Seven Weeks after DCA



Medullary Thyroid Cancer and DCA



Calcitonin 39,000



6 Months with DCA
Calcitonin 2,000

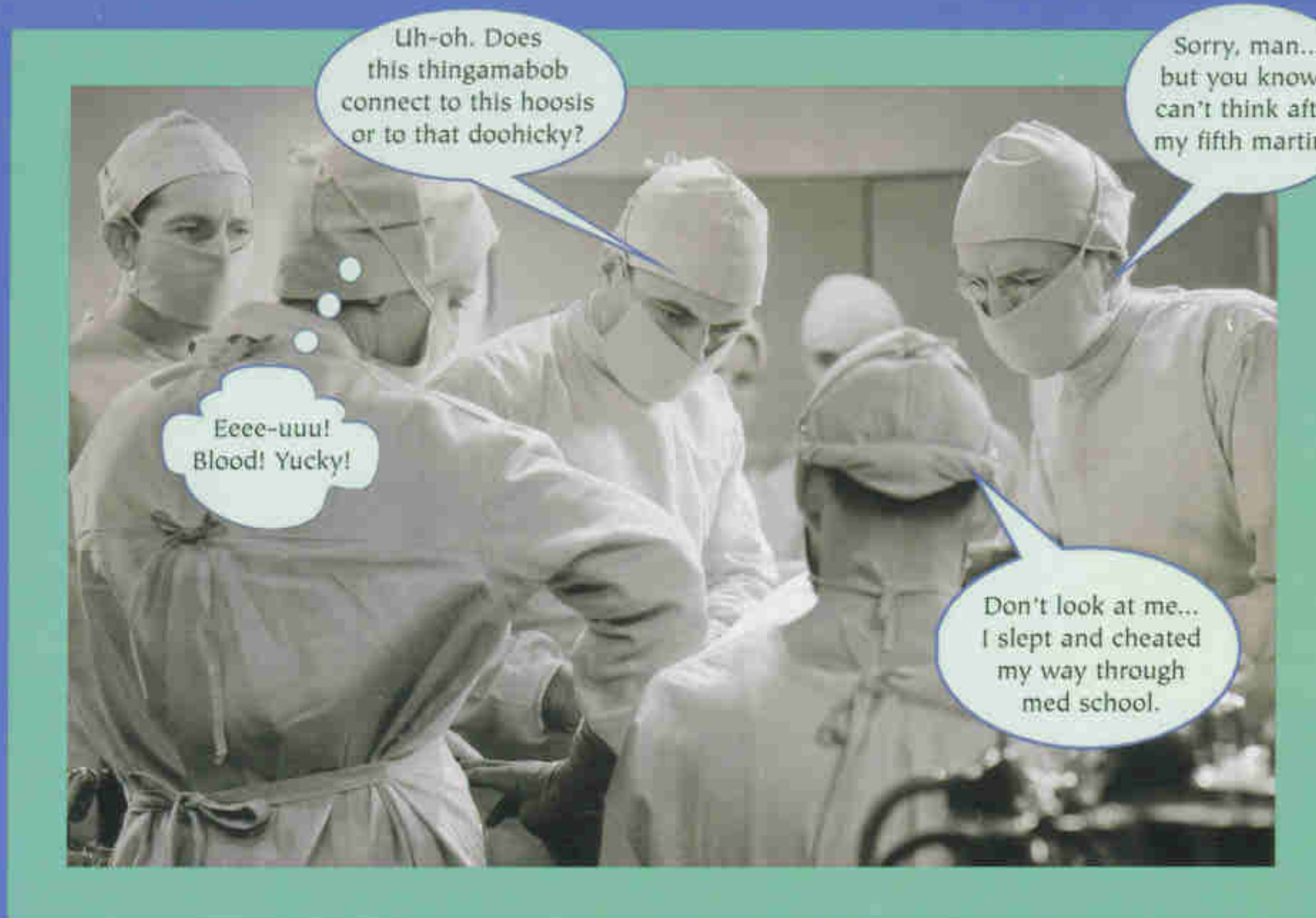
Off label Drugs in Cancer Reversals

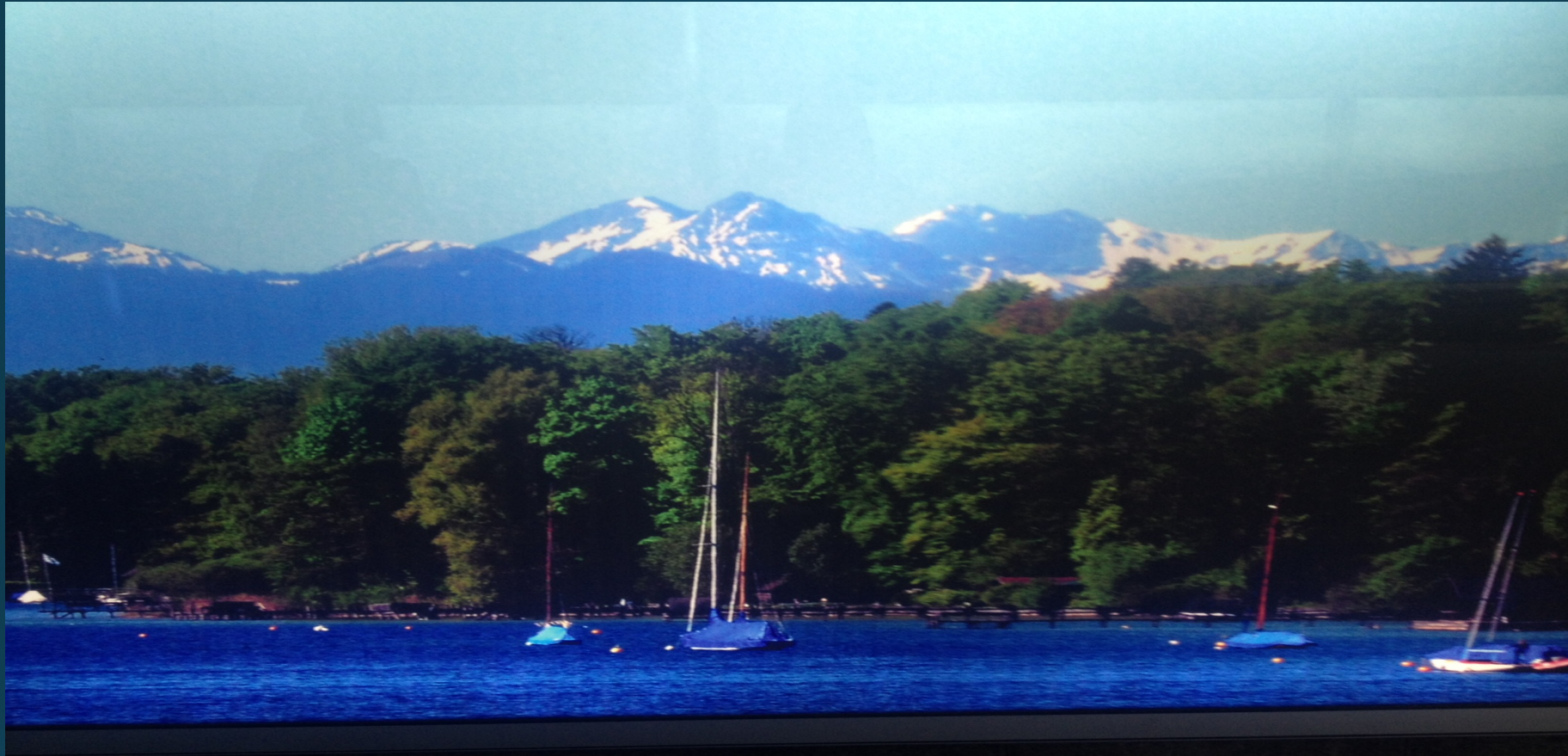
- Low dose naltrexone
- Metformin
- Dichloracetate
- Cimetidine
-
- Cromolyn
- Itraconazole
- Doxycycline
- Indomethacin
- Retinoic acid
- Mebendazole
- Revlimid

Summary:

Reversing Cancer with Biochemistry utilizes the Pathological targets in cancer to down regulate these targets, weaken tumor cells defense, up regulate the immune system, and increase the ability of the body to reverse the disease.

Biochemistry wins over surgery!





With Special Thanks from Starnberg, Germany

Dr. Dana F. Flavin www.collmed.org

